

AG 5000 Quick Start

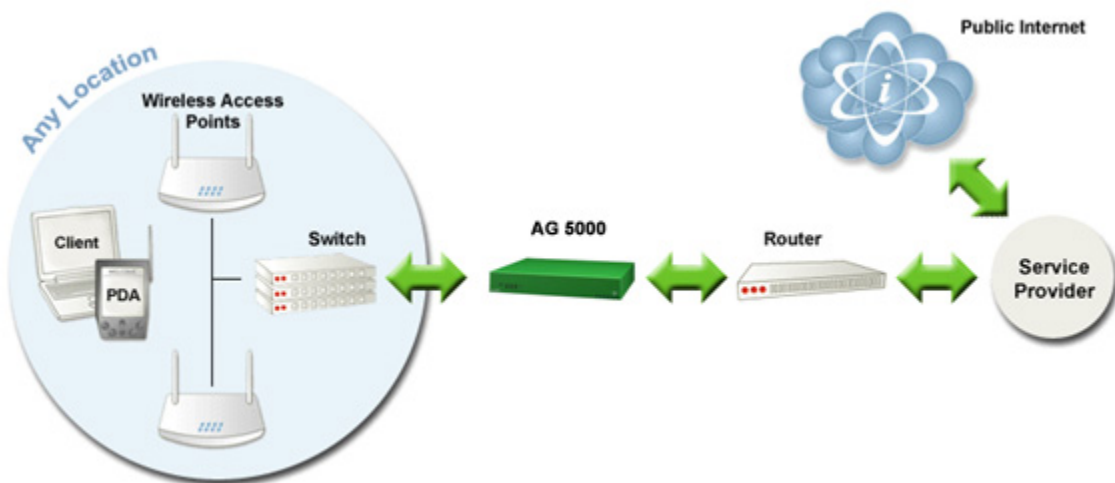
This document provides instructions and reference material for getting started with the Nomadix Access Gateway 5000 (AG 5000) product. If you have any problems, please contact our technical support team at +1.818.575.2590, or email: support@nomadix.com.

Start Here

1. Unpack the AG 5000 and place the product on a flat and stable work surface.
2. Connect the power cord.
3. Connect the DB9 female-to-female (NULL) serial cable (6ft. length) between the product's "serial port" and your computer.
4. Power up your computer and turn on the product.
5. Start a HyperTerminal session to communicate with the AG 5000 via the product's serial interface. Use the following configuration settings for your session:

| Bits per Second | Data Bits | Parity | Stop Bits | Flow Control |
|-----------------|-----------|--------|-----------|--------------|
| 9600 | 8 | None | 1 | None |

6. Log in to the Command Line interface:
The default for both the Username and Password is **admin**.
7. Go to the "Configuration" section on the next page and configure the AG 5000 for your network.



AG 5000 Quick Start (cont'd)

Configuration

Note: The network side of the AG 5000 must be connected to a live network that can access the Internet or you will not be able to receive the License Key from our server (Step 3).

Step 1: Configuring IP and DNS information

Static IP Configuration

For AG 5000 with Static IP address, enter IP address and DNS information as shown in steps 1a and 1b.

In case of AG 5000 configured with DHCP Client, skip to ***Step 2: Entering location information***, since the AG 5000 has already received the IP and DNS settings from the DHCP server.

Step 1a: Entering your static IP Address Information

| IP Address | Your Settings | Examples |
|--------------------|---------------|---------------|
| Network IP Address | | 10.0.0.10 |
| Subnet Mask | | 255.255.255.0 |
| Default Gateway | | 10.0.0.1 |

Step 1b: Entering Your DNS Information

| DNS Parameter | Your Settings | Examples |
|--|---------------|-------------|
| Domain Name | | nomadix.com |
| Host Name (<i>no spaces</i>) | | NSE |
| Primary DNS Server (<i>mandatory</i>) | | 198.6.1.1 |
| Secondary DNS Server (<i>optional</i>) | | 198.6.1.2 |
| Tertiary DNS Server (<i>optional</i>) | | 198.6.1.4 |

You will be asked to reboot after you enter the DNS information. Please enter (y)es when prompted to reboot.

AG 5000 Quick Start (cont'd)

Sample Screen Responses

IP and DNS Parameters

```

Login: admin
Password: *****

NO LICENSE KEY HAS BEEN ENTERED. A LICENSE KEY MUST BE ENTERED
IN ORDER TO PROCEED WITH INSTALLATION.
SEE USER'S GUIDE FOR LICENSE KEY INFORMATION.

INSTALLATION WILL NOW TRY TO CONTACT THE NOMADIX LICENSE KEY SERVER.
IN ORDER TO PROCEED, THE NSE MUST BE ABLE TO CONNECT TO THE INTERNET.
DO YOU WANT TO CONFIGURE THE NSE'S IP AND DNS SETTINGS? [yes/no]: y

Select the Network Interface Configuration Mode:
0 - Static
1 - DHCP Client
2 - PPPoE Client

Select the Network Interface Configuration Mode      [0]: 0

Enter network interface IP      [10.0.0.10      ]: 192.168.1.10
Enter subnet mask                [255.255.255.0   ]:
Enter default gateway IP        [10.0.0.1      ]: 192.168.1.254

NOTE: If DHCP Client or PPPoE Client is enabled, the Primary and
Secondary DNS Server may not be configured, since the DHCP/PPPoE server
may provide those items. Furthermore, if DHCP Client is configured, the
Domain may not be configured.

Enter domain                      [nomadix2.com   ]:
Enter host name (no spaces)       [ag2100      ]:
Enter primary DNS                 [0.0.0.1     ]: 198.6.1.1
Enter secondary DNS               [0.0.0.0     ]: 0.0.0.0
Enter tertiary DNS                [198.6.1.2   ]:

The system must be rebooted to function properly.
Reboot? [yes/no]: █

```

PPPoE Client Configuration

For AG 5000 with network configuration set to PPPoE client, enter DNS information as shown in step 1a and PPPoE client configuration information as shown in step 1b.

Please note that in case of PPPoE client, only the tertiary DNS server is configurable. It is assumed that the Primary and Secondary DNS servers are provided by the PPPoE server.

AG 5000 Quick Start (cont'd)

Step 1a: Entering your DNS Information

| DNS Parameter | Your Settings | Examples |
|--|---------------|---------------|
| Domain Name | | Nomadix2.com |
| Host Name (<i>no spaces</i>) | | NSE |
| Primary DNS Server (<i>not configurable</i>) | | |
| Secondary DNS Server (<i>not configurable</i>) | | |
| Tertiary DNS Server (<i>optional</i>) | | 100.100.100.6 |

Step 1b: Entering your PPPoE Information

| PPPoE Parameter | Your Settings | Examples |
|-------------------------|---------------|----------|
| PPPoE Service Name | | AG 5000 |
| Echo Request Interval | | 30 |
| Maximum non-responses | | 6 |
| Authentication Username | | Test |
| Authentication Password | | Test |

Select the PPP IP address configuration mode. If you select Dynamic, the IP address will be automatically assigned by the PPP server. If you select Static, please enter the IP address.

| | | |
|-----------------|--|------|
| TCP maximum MSS | | 1452 |
|-----------------|--|------|

AG 5000 Quick Start (cont'd)

Sample Screen Responses

DNS Parameters and PPPoE Configuration

```

Select the Network Interface Configuration Mode:

0 - Static
1 - DHCP Client
2 - PPPoE Client

Select the Network Interface Configuration Mode      [0]: 2

NOTE: If DHCP Client or PPPoE Client is enabled, the Primary and
Secondary DNS Server may not be configured, since the DHCP/PPPoE server
may provide those items. Furthermore, if DHCP Client is configured, the
Domain may not be configured.

Domain                nomadix2.com
Host Name              ag2100
Primary DNS            198.6.1.1
Secondary DNS          0.0.0.0
Tertiary DNS           198.6.1.2

Enter domain          [nomadix2.com   ]:
Enter host name (no spaces) [ag2100       ]:
Enter tertiary DNS     [198.6.1.2    ]:
PPPoE Service Name (or "none") [ag2100      ]:
PPP echo-request interval      [30          ]:
PPP maximum non-responses     [6           ]:
PPP authentication Username (or "none") [1024       ]:
PPP authentication Password (or "none") [1024       ]:

Select the PPP IP address Configuration Mode:

0 - Dynamic
1 - Static

Select the PPP IP address Configuration Mode      [0]          ]:
TCP maximum MSS                                [1452       ]:

PPPoE Service Name                ag2100
PPP Keep-Alive:
  Echo-Request Interval            30
  Maximum Non-responses            6
PPP Authentication:
  User Name                        1024
  Password                          1024
IP Configuration Mode              Dynamic
Static IP Address                   0.0.0.0
Maximum TCP MSS                     1452

The system must be rebooted to function properly.
Reboot? [yes/no]:

```

You will be asked to reboot after you enter this information. Please enter (y)es when prompted to reboot.

AG 5000 Quick Start (cont'd)

Step 2: Entering Your Location Information

When the system powers up, you will be asked to input location information.

| Location Information | Your Settings | Examples |
|------------------------------------|---------------|------------------------|
| Company Name (<i>mandatory</i>) | | Nomadix, Inc. |
| Site Name (<i>mandatory</i>) | | Headquarters |
| Address (<i>2 lines</i>) | | 1100 Business Center |
| City (<i>mandatory</i>) | | Newbury Park |
| State (<i>mandatory</i>) | | California |
| Zip | | 91330 |
| Country (<i>mandatory</i>) | | USA |
| Email Address (<i>mandatory</i>) | | nomad@nomadix.com |
| Venue Type (<i>mandatory</i>) | | Corporate Guest Access |
| ISO Country Code | | US |
| Phone Country Code | | 1 |
| Calling Area Code | | 818 |
| Network SSID/ZONE | | NDHQ |

Step 3: Retrieving Your License Key

When you have entered your IP Addresses, DNS and Location information, the system will prompt you to accept or decline the End User License Agreement (EULA). You must accept the terms of the EULA before the AG 5000 can retrieve its License Key.

To retrieve the License Key, enter **y[es]** at the prompt.

The AG 5000 retrieves the License Key from the Nomadix License Key Server, then reboots.

Step 4: Configuring AG 5000 DHCP Server Settings

DHCP Server is enabled by default. To configure the DHCP Server, go to DHCP under the Configuration menu. You can either modify the default DHCP pool or delete/add another DHCP pool.

AG 5000 Quick Start (cont'd)

| DHCP Parameter | Your Settings | Examples |
|--|---------------|---------------|
| DHCP Services (Disable) | | no |
| DHCP Relay (Yes / No) <i>If No, skip to DHCP Server</i> | | no |
| DHCP Relay Server IP Address | | blank |
| DHCP Relay Agent IP Address | | Blank |
| DHCP Server (Yes / No) Only if the DHCP Relay is disabled | | yes |
| DHCP Server IP Address | | 10.0.0.4 |
| DHCP Server Subnet Mask | | 255.255.255.0 |
| DHCP Pool Start IP Address | | 10.0.0.12 |
| DHCP Pool End IP Address | | 10.0.0.72 |
| DHCP Lease Minutes | | 1440 |

Step 5: Configuring the System

Log in to the AG 5000 and use the graphical Web Management Interface (WMI) to configure the product's features. You have now established a basic configuration for the AG 5000 that enables "Plug and Play" Internet connectivity.

For additional information about the available AG 5000 features, refer to Chapter 2 of the AG 5000 User's Guide. For example:

- ❑ To establish various billing and authentication methods, see *Defining the AAA Services*.
- ❑ To establish hotel billing, see *Assigning a PMS Service*.