

## AG 3100, AG 5500 and Metro Bundle Quick Start

This document provides instructions and reference material for getting started with the Nomadix Access Gateway products, specifically the AG 3100, AG 5500 and AG 5500 Metro Bundle. If you have any problems, please contact our technical support team at +1.818.575.2590, or email: [support@nomadix.com](mailto:support@nomadix.com).

### Accessory Box Contents

Note that the contents of the Accessory Box that ships with AG 3100, AG 5500 and AG 5500 Metro Bundle has changed. The following list indicates the updated contents. This supersedes the information in the User Guide.

#### AG 3100

- 1 – NSE Accessory CD
- 1 - Non-Euro Power Cable
- 1 - Euro Power Cable
- 1 - 6’ Serial Null Modem Cable
- 2 - Rack Mount Brackets (Green)
- 1 – Bumper and Screw Kit

#### AG 5500, AG 5500 Metro Bundle

- 1 - NSE Accessory CD
- 1 - Non-Euro Power Cable
- 1 - Euro Power Cable
- 1 - 6’ Serial Null Modem Cable
- 2 - Rack Mount Brackets (Green)
- 1 – Bumper and Screw Kit

### Start Here

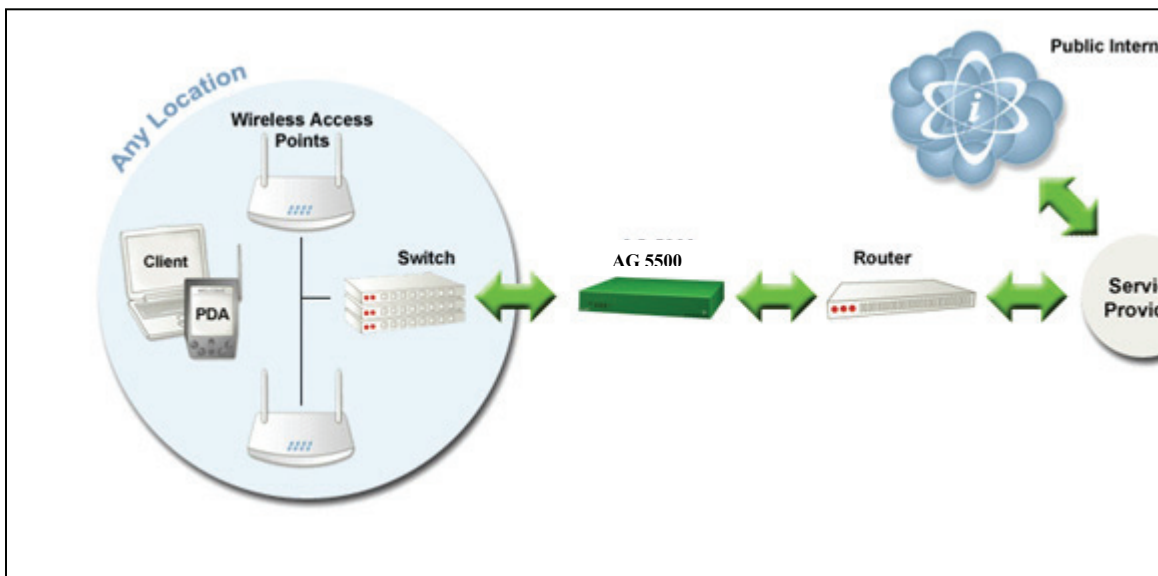
1. Unpack the Nomadix Access Gateway and place the product on a flat and stable work surface.
2. Connect the power cord.
3. There are two ways to connect to the Access Gateway:
  - a. Serial Connection:
    - i. Connect the DB9 female-to-female (NULL) serial cable (6ft. length) between the product’s serial interface and your computer.
    - ii. Start a HyperTerminal session to communicate with the AG via the product’s serial interface. Use the following configuration settings for your session:

Bits per Second	Data Bits	Parity	Stop Bits	Flow Control
9600	8	None	1	None

## Access Gateway Quick Start (cont'd)

- b. Subscriber-side Ethernet Connection:
  - i. Connect a cross-over Ethernet cable between the product's "subscriber port" and your computer's Ethernet port.
  - ii. Configure your computer to use DHCP.
  - iii. Setup a SSH client establish a SSH session to communicate with the NSE gateway via the administrative IP address after the Access Gateway finishes powering up. The administrative IP address is 172.30.30.172.
4. Power up your computer and turn on the product.
5. Log in to the Command Line interface:

The default for both the Username and Password is **admin**.
6. Go to the "Configuration" section on the next page and configure the AG for your network.



## Access Gateway Quick Start (cont'd)

### Configuration

*Note: The network side of the AG must be connected to a live network that can access the Internet or you will not be able to receive the License Key from our server (Step 3).*

#### ***Step 1: Configuring IP and DNS information***

##### **Static IP Configuration**

For an AG with a Static IP address, enter IP address and DNS information as shown in steps 1a and 1b.

In case the AG is configured with DHCP Client, skip to ***Step 2: Entering location information***, since the AG has already received the IP and DNS settings from the DHCP server.

##### ***Step 1a: Entering your static IP Address Information***

IP Address	Your Settings	Examples
Network IP Address		10.0.0.10
Subnet Mask		255.255.255.0
Default Gateway		10.0.0.1

##### ***Step 1b: Entering Your DNS Information***

DNS Parameter	Your Settings	Examples
Domain Name		nomadix.com
Host Name ( <i>no spaces</i> )		nse
Primary DNS Server ( <i>mandatory</i> )		198.6.1.1
Secondary DNS Server ( <i>optional</i> )		198.6.1.2
Tertiary DNS Server ( <i>optional</i> )		198.6.1.4

You will be asked to reboot after you enter the DNS information. Please enter (y)es when prompted to reboot.

## Access Gateway Quick Start (cont'd)

### *Sample Screen Responses*

#### *IP and DNS Parameters*

```

Login: admin
Password: *****

NO LICENSE KEY HAS BEEN ENTERED. A LICENSE KEY MUST BE ENTERED
IN ORDER TO PROCEED WITH INSTALLATION.
SEE USER'S GUIDE FOR LICENSE KEY INFORMATION.

INSTALLATION WILL NOW TRY TO CONTACT THE NOMADIX LICENSE KEY SERVER.
IN ORDER TO PROCEED, THE NSE MUST BE ABLE TO CONNECT TO THE INTERNET.

DO YOU WANT TO CONFIGURE THE NSE'S IP AND DNS SETTINGS? [yes/no]; y

Select the Network Interface Configuration Mode:

0 - Static
1 - DHCP Client
2 - PPPoE Client

Select the Network Interface Configuration Mode      [0]: 0

Enter network interface IP      [10.0.0.10   ]: 192.168.1.10
Enter subnet mask               [255.255.255.0 ]:
Enter default gateway IP       [10.0.0.1   ]: 192.168.1.254

NOTE: IF DHCP Client or PPPoE Client is enabled, the Primary and
Secondary DNS Server may not be configured, since the DHCP/PPPoE server
may provide those items. Furthermore, if DHCP Client is configured, the
Domain may not be configured.

Enter domain                    [nomadix.com  ]:
Enter host name (no spaces)     [nse     ]:
Enter primary DNS               [0.0.0.1   ]: 198.6.1.1
Enter secondary DNS             [0.0.0.0   ]: 0.0.0.0
Enter tertiary DNS              [198.6.1.2  ]:

The system must be rebooted to function properly.
Reboot? [yes/no]: █

```

### **PPPoE Client Configuration**

For an AG with network configuration set to PPPoE client, enter DNS information as shown in step 1a and PPPoE client configuration information as shown in step 1b.

Please note that in case of PPPoE client, only the tertiary DNS server is configurable. It is assumed that the Primary and Secondary DNS servers are provided by the PPPoE server.

Access Gateway Quick Start (cont'd)

***Step 1a: Entering your DNS Information***

DNS Parameter	Your Settings	Examples
Domain Name		nomadix.com
Host Name ( <i>no spaces</i> )		nse
Primary DNS Server ( <i>not configurable</i> )		
Secondary DNS Server ( <i>not configurable</i> )		
Tertiary DNS Server ( <i>optional</i> )		198.6.1.2

***Step 1b: Entering your PPPoE Information***

PPPoE Parameter	Your Settings	Examples
PPPoE Service Name		NSE
Echo Request Interval		30
Maximum non-responses		6
Authentication Username		Test
Authentication Password		Test

Select the PPP IP address configuration mode. If you select Dynamic, the IP address will be automatically assigned by the PPP server. If you select Static, please enter the IP address.

TCP maximum MSS		1452
-----------------	--	------

## Access Gateway Quick Start (cont'd)

### *Sample Screen Responses*

#### *DNS Parameters and PPPoE Configuration*

```

Select the Network Interface Configuration Mode:

0 - Static
1 - DHCP Client
2 - PPPoE Client

Select the Network Interface Configuration Mode      [0]: 2

NOTE: If DHCP Client or PPPoE Client is enabled, the Primary and
Secondary DNS Server may not be configured, since the DHCP/PPPoE server
may provide those items. Furthermore, if DHCP Client is configured, the
Domain may not be configured.

Domain                nowadix.com
Host Name             nse
Primary DNS           198.6.1.1
Secondary DNS         0.0.0.0
Tertiary DNS          198.6.1.2

Enter domain          [nowadix.com   ]:
Enter host name (no spaces) [nse       ]:
Enter tertiary DNS     [198.6.1.2   ]:
PPPoE Service Name (or "none") [nse       ]:
PPP echo-request interval [30        ]:
PPP maximum non-responses [6         ]:
PPP authentication Username (or "none") [1024     ]:
PPP authentication Password (or "none") [1024     ]:

Select the PPP IP address Configuration Mode:

0 - Dynamic
1 - Static

Select the PPP IP address Configuration Mode      [0]          ]:
TCP maximum MSS                                  [1452       ]:

PPPoE Service Name                nse
PPP Keep-Alive:
  Echo-Request Interval            30
  Maximum Non-responses            6
PPP Authentication:
  User Name                        1024
  Password                          1024
IP Configuration Mode              Dynamic
Static IP Address                   0.0.0.0
Maximum TCP MSS                     1452

The system must be rebooted to function properly.
Reboot? [yes/no]:

```

You will be asked to reboot after you enter this information. Please enter (y)es when prompted to reboot.

## Access Gateway Quick Start (cont'd)

### ***Step 2: Entering Your Location Information***

When the system powers up, you will be asked to input location information.

Location Information	Your Settings	Examples
Company Name ( <i>mandatory</i> )		Nomadix, Inc.
Site Name ( <i>mandatory</i> )		Headquarters
Address ( <i>2 lines</i> )		1100 Business Center
City ( <i>mandatory</i> )		Newbury Park
State ( <i>mandatory</i> )		California
Zip		91330
Country ( <i>mandatory</i> )		USA
Email Address ( <i>mandatory</i> )		nomad@nomadix.com
Venue Type ( <i>mandatory</i> )		Corporate Guest Access
ISO Country Code		US
Phone Country Code		1
Calling Area Code		818
Network SSID/ZONE		NDHQ

### ***Step 3: Retrieving Your License Key***

When you have entered your IP Addresses, DNS and Location information, the system will prompt you to accept or decline the End User License Agreement (EULA). You must accept the terms of the EULA before the AG can retrieve its License Key.

To retrieve the License Key, enter **y[es]** at the prompt.

The AG retrieves the License Key from the Nomadix License Key Server, then reboots.

### ***Step 4: Configuring AG DHCP Server Settings***

DHCP Server is enabled by default. To configure the DHCP Server, go to DHCP under the Configuration menu. You can either modify the default DHCP pool or delete/add another DHCP pool.

## Access Gateway Quick Start (cont'd)

DHCP Parameter	Your Settings	Examples
DHCP Services (Disable)		no
DHCP Relay (Yes / No) <i>If No, skip to DHCP Server</i>		no
DHCP Relay Server IP Address		blank
DHCP Relay Agent IP Address		Blank
DHCP Server (Yes / No) Only if the DHCP Relay is disabled		yes
DHCP Server IP Address		10.0.0.4
DHCP Server Subnet Mask		255.255.255.0
DHCP Pool Start IP Address		10.0.0.12
DHCP Pool End IP Address		10.0.0.72
DHCP Lease Minutes		1440

### ***Step 5: Configuring the System***

Log in to the AG and use the graphical Web Management Interface (WMI) to configure the product's features. You have now established a basic configuration for the AG that enables "Plug and Play" Internet connectivity.

For additional information about the available AG features, refer to Chapter 2 of the User Guide specific to your AG. For example:

- ❑ To establish various billing and authentication methods, see *Defining the AAA Services*.
- ❑ To establish hotel billing, see *Assigning a PMS Service*.