



Purpose: To enable IP Upsell and how to assign a public address to the user.

In order to assign a user a public address using IP Upsell, the user must have DHCP enabled on their PC.

Step 1: Set the pool (Private) for IP Upsell

Click on private pool Server-IP address, 10.0.0.4 in the example below. Check IP Upsell option and click Modify.

Note: You may change the pool to any other desired network/subnet (192.168.1.0 For example) and click “Modify”

[Back to Main DHCP Configuration Page](#)

Edit a DHCP Pool

DHCP Server IP	<input type="text" value="10.0.0.4"/>		
DHCP Server Netmask	<input type="text" value="255.255.255.0"/>		
DHCP Pool Start IP	<input type="text" value="10.0.0.12"/>		
DHCP Pool Stop IP	<input type="text" value="10.0.0.250"/>		
DHCP Lease Minutes	<input type="text" value="1440"/>		
<input type="radio"/> Public Pool	<input checked="" type="radio"/> Private Pool	<input checked="" type="checkbox"/> IP Upsell Pool	<input checked="" type="checkbox"/> Default Pool
<input type="button" value="Modify"/>	<input type="button" value="Remove"/>		

Note: Please make sure pools do not overlap.

<u>Server-IP</u>	<u>Server-Netmask</u>	<u>Start-IP</u>	<u>End-IP</u>	<u>Lease</u>	<u>IP Type</u>	<u>IP-Upsell</u>	
10.0.0.4	255.255.255.0	10.0.0.12	10.0.0.250	1440	PRIVATE	NO	* Default Pool

Total number of leases: 239

[Back to Main DHCP Configuration Page](#)



Step 2: Add a new pool (public)

Enter the IP addresses that are available (not used by any other devices) on your network, specify lease time, check Public Pool and IP Upsell Pool options as it shows on the example below and click Add.

Note: IP addresses have to be on the same network/subnet as the Nomadix gateway.

[Back to Main DHCP Configuration Page](#)

Add DHCP Pools

DHCP Server IP	<input type="text" value="67.130.149.16"/>		
DHCP Server Netmask	<input type="text" value="255.255.255.224"/>		
DHCP Pool Start IP	<input type="text" value="67.130.149.17"/>		
DHCP Pool Stop IP	<input type="text" value="67.130.149.100"/>		
DHCP Lease Minutes	<input type="text" value="60"/>		
<input checked="" type="radio"/> Public Pool	<input type="radio"/> Private Pool	<input checked="" type="checkbox"/> IP Upsell Pool	<input type="checkbox"/> Default Pool
<input type="button" value="Add"/>			

Note: Please make sure pools do not overlap.

<u>Server-IP</u>	<u>Server-Netmask</u>	<u>Start-IP</u>	<u>End-IP</u>	<u>Lease</u>	<u>IP Type</u>	<u>IP-Upsell</u>	
10.0.0.4	255.255.255.0	10.0.0.12	10.0.0.250	1440	PRIVATE	NO	* Default Pool

Total number of leases: 239

[Back to Main DHCP Configuration Page](#)



Step 3: Complete IP Upsell configuration and reboot

Enable IP Upsell and Subnet-based. Check “Reboot after changes are saved” option and click Submit. The Gateway will reboot

In the picture below it shows two (2) DHCP pools Private and Public. Both set to IP Upsell (YES)

DHCP Settings

DHCP Services	<input type="checkbox"/> Disable																								
DHCP Relay	<input type="checkbox"/> Enable																								
DHCP Server IP	<input type="text"/>																								
DHCP Relay Agent IP	<input type="text"/>																								
DHCP Server	<input checked="" type="checkbox"/> Enable <input checked="" type="checkbox"/> Subnet-based <input checked="" type="checkbox"/> IP-Upsell Note: To enable IP Upsell, make sure your license includes it.																								
<table border="1"><thead><tr><th>Server-IP</th><th>Server-Netmask</th><th>Start-IP</th><th>End-IP</th><th>Lease</th><th>IP Type</th><th>IP-Upsell</th><th></th></tr></thead><tbody><tr><td>10.0.0.4</td><td>255.255.255.0</td><td>10.0.0.12</td><td>10.0.0.250</td><td>1440</td><td>PRIVATE</td><td>YES</td><td>* Default Pool</td></tr><tr><td>67.130.149.16</td><td>255.255.255.0</td><td>67.130.149.17</td><td>67.130.149.100</td><td>60</td><td>PUBLIC</td><td>YES</td><td></td></tr></tbody></table> <p>Total number of leases: 323</p>		Server-IP	Server-Netmask	Start-IP	End-IP	Lease	IP Type	IP-Upsell		10.0.0.4	255.255.255.0	10.0.0.12	10.0.0.250	1440	PRIVATE	YES	* Default Pool	67.130.149.16	255.255.255.0	67.130.149.17	67.130.149.100	60	PUBLIC	YES	
Server-IP	Server-Netmask	Start-IP	End-IP	Lease	IP Type	IP-Upsell																			
10.0.0.4	255.255.255.0	10.0.0.12	10.0.0.250	1440	PRIVATE	YES	* Default Pool																		
67.130.149.16	255.255.255.0	67.130.149.17	67.130.149.100	60	PUBLIC	YES																			
<input type="button" value="Add"/>	Click here to add a new DHCP Pool.																								

NOTE: You must reboot for configuration changes to take effect.

Reboot after changes are saved? Yes



Internal Web Server Usernames – when creating the user profile, you can select Private or Public for the DHCP Address Type.

Add a Subscriber Profile to the Database

Subscriber **Device**

DHCP Address Type	Private <input type="radio"/> Public <input checked="" type="radio"/>	<i>Only used if subscriber is configured for DHCP</i>
Proxy Arp For Device	<input type="checkbox"/> Enable	
802.1Q Device Port	<input type="text" value="0"/>	<i>Only if device and Port-Location is 802.1Q two-way</i>
MAC Address	<input type="text" value="00"/>	
IP Address	<input type="text"/>	
Subnet	<input type="text"/>	
Username	<input type="text" value="john"/>	
Password	<input type="password" value="•••"/>	
Expiration Time	<input type="text" value="0"/> hrs <input type="text" value="0"/> mins	
Count-down after Login	<input type="checkbox"/> Enable	
Paid	USD <input type="text" value="0.00"/>	
User Definable 1	<input type="text"/>	
User Definable 2	<input type="text"/>	
UpStream Bandwidth	<input type="text" value="512"/> Kbps	
DownStream Bandwidth	<input type="text" value="1024"/> Kbps	



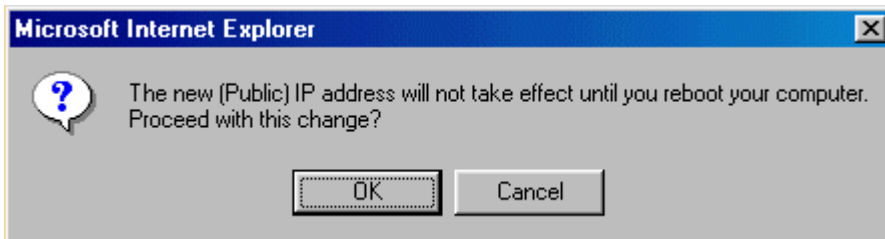
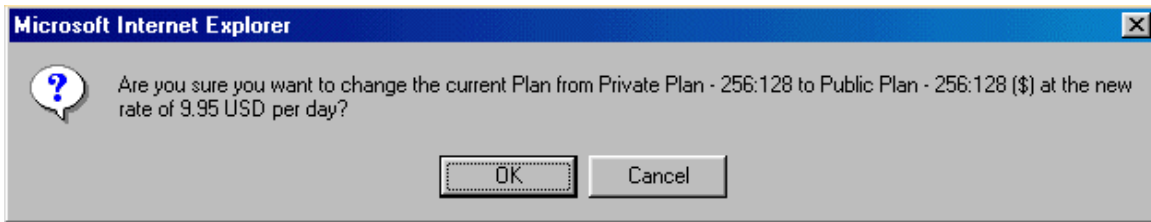
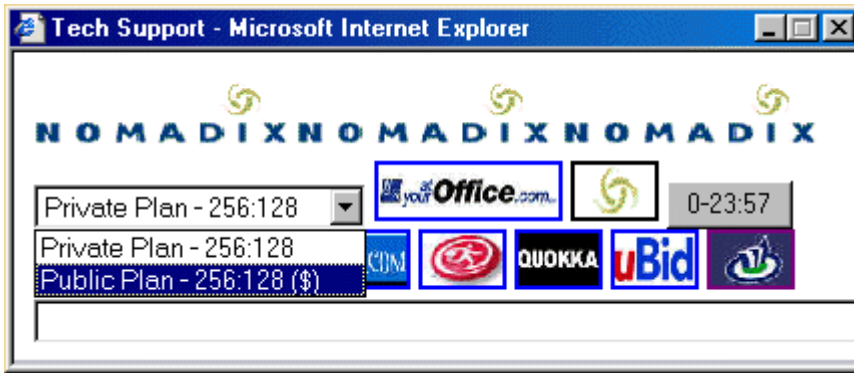
Internal Web Server Billing Options - set for Public and Private Plans

Internal Billing Options Plan Setup		Internal Billing Options Plan Setup	
Plan	0	Plan	1
Enable	<input checked="" type="checkbox"/>	Enable	<input checked="" type="checkbox"/>
Label	<input type="text" value="Private Plan"/>	Label	<input type="text" value="Public Plan"/>
Description of Service	<input type="text" value="256K downstream, 128K upstream"/>	Description of Service	<input type="text" value="512K downstream, 256K upstream"/>
Pricing		Pricing	
Rate Per Minute	<input type="text" value="0.00"/>	Rate Per Minute	<input type="text" value="0.00"/>
Rate Per Hour	<input type="text" value="0.00"/>	Rate Per Hour	<input type="text" value="0.00"/>
Rate Per Day	<input type="text" value="8.95"/>	Rate Per Day	<input type="text" value="9.95"/>
Rate Per Week	<input type="text" value="0.00"/>	Rate Per Week	<input type="text" value="0.00"/>
Rate Per Month	<input type="text" value="0.00"/>	Rate Per Month	<input type="text" value="0.00"/>
Time Unit		Time Unit	
Minute	<input type="radio"/>	Minute	<input type="radio"/>
Hour	<input type="radio"/>	Hour	<input type="radio"/>
Day	<input checked="" type="radio"/>	Day	<input checked="" type="radio"/>
Week	<input type="radio"/>	Week	<input type="radio"/>
Month	<input type="radio"/>	Month	<input type="radio"/>
Bandwidth		Bandwidth	
Up	<input type="text" value="128"/>	Up	<input type="text" value="256"/>
Down	<input type="text" value="256"/>	Down	<input type="text" value="512"/>
DHCP Pool		DHCP Pool	
Private	<input checked="" type="radio"/>	Private	<input type="radio"/>
Public	<input type="radio"/>	Public	<input checked="" type="radio"/>
<small>NOTE: Public option requires IP Upsell to be turned on. Otherwise, subscribers will receive private IP addresses.</small>		<small>NOTE: Public option requires IP Upsell to be turned on. Otherwise, subscribers will receive private addresses.</small>	
Wired for Business	<input type="checkbox"/>	Wired for Business	<input type="checkbox"/>
<input type="button" value="Submit this Plan"/> <input type="button" value="Delete this Plan"/> <input type="button" value="Reset"/>		<input type="button" value="Submit this Plan"/> <input type="button" value="Delete this Plan"/> <input type="button" value="Reset"/>	
<input type="button" value="Back"/>		<input type="button" value="Back"/>	

Radius – add the Nomadix-IP-Upsell to your dictionary and Nomadix-IP-Upsell = 1 attribute to the subscriber’s profile



Information and Control Console (ICC) – With the ICC enabled and a Public and Private billing plan enabled, a user who originally purchased a private plan can upgrade their plan to a public one.



XML - By adding the IP_Type attribute to the User_Add command, you can assign either a private or public address for the subscriber.

`</IP_Type>PUBLIC</IP_Type>` - allows the subscriber to receive a public DHCP lease.