

User Guide Addendum Nomadix Service Engine (NSE) - Release 2008.2 August 2008

Introduction

This User's Guide Addendum provides information and procedures that will enable system administrators to configure and use the specific features introduced in Release 2008.2 for the Nomadix Access Gateway product line.

The features covered are:

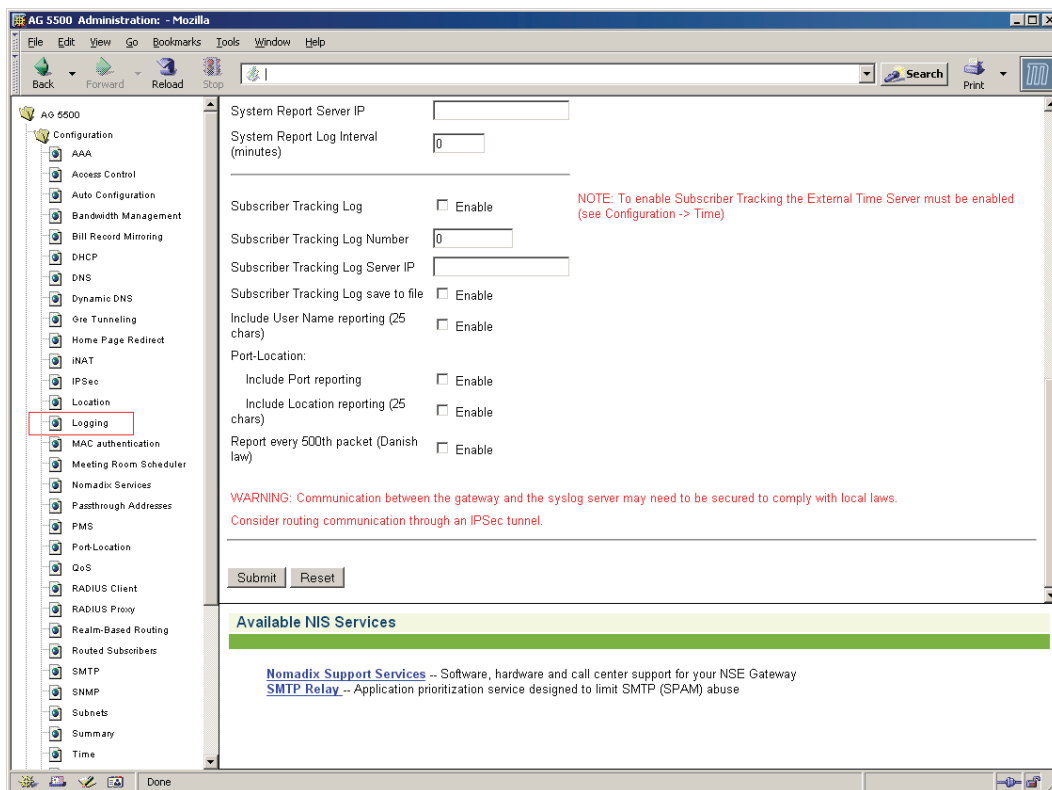
<i>Subscriber Tracking Log for Lawful Intercept (LI)</i>	2
<i>Persistent ARP Add</i>	4
<i>Persistent Route Add</i>	5

Feature Configurations

Subscriber Tracking Log for Lawful Intercept (LI)

This functionality can be accessed under the following Menus:

- **WMI Configuration**
 - Go to Configuration -> Logging
- **CLI Configuration**
 - Go to Configuration -> Logging
- **SNMP Configuration**
 - Go to System -> SystemSubsTrackingLog



Subscriber Tracking Log Enable

This is how you enable or disable the Subscriber tracking log. *Note: NTP must be enabled on the NSE for Subscriber tracking log to be enabled.*

Subscriber Tracking Log Number

This is the syslog number to identify this syslog to your Server.

Subscriber Tracking Log Server IP

This is the IP address of the Syslog server that is listening for the syslogs from your NSE.

Subscriber Tracking Log save to file Enable

This is how you save the syslogs locally to the NSE flash. *Note: Not recommended*

Include User Name Reporting Enable

This will include the first 25 characters of the username in the Syslog

Port Location Include Port Reporting Enable and Include Location Enable

These will include the port information from the port location table and the Port reported to the system by either VLAN or SNMP query. The Location information is limited to 25 characters.

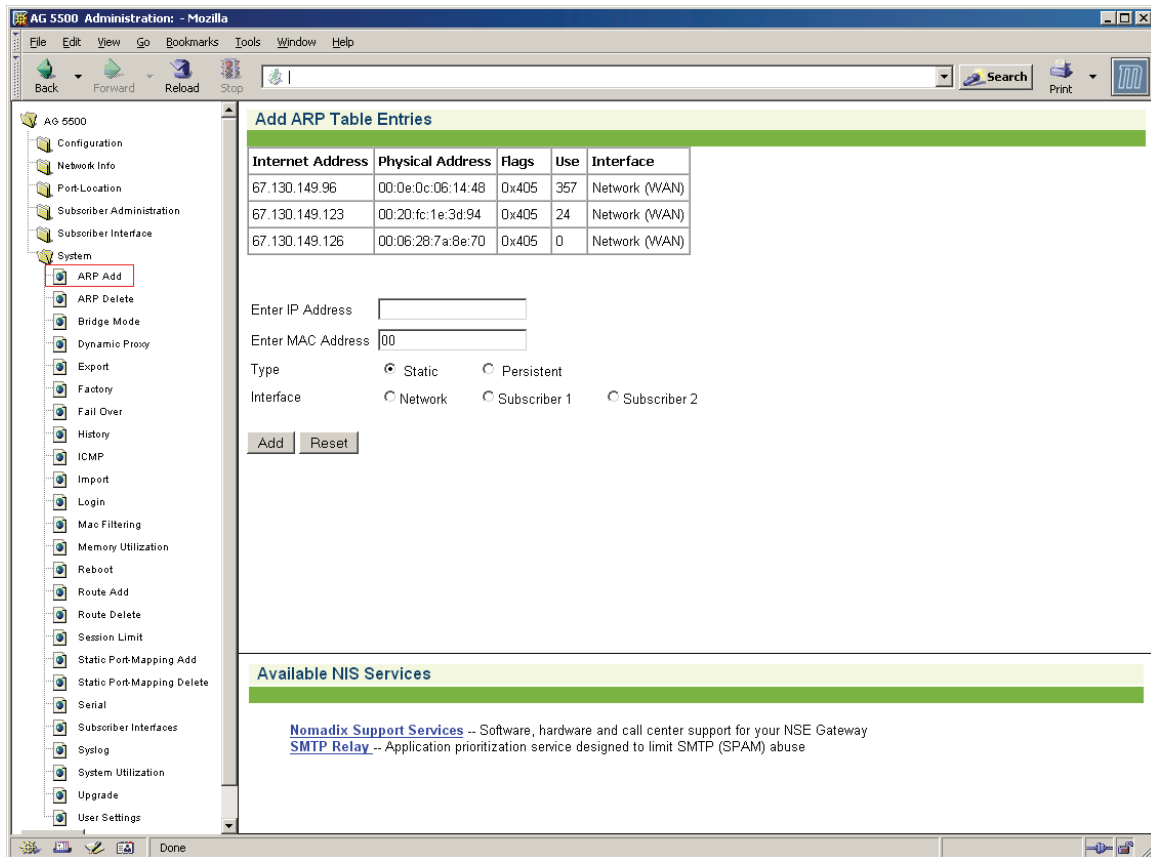
Include every 500th Packet Enable

This allows for following the Danish law that requires the 500th packet for each subscriber to be logged. Enabling this will send the 500th packet for each subscriber to the syslog system.

Persistent ARP Add

This Configuration can be made from the following menus:

- **WMI Configuration**
 - Go to System -> ARP Add
- **CLI Configuration**
 - Go to System -> ArpAdd
- **SNMP Configuration**
 - Not available in SNMP



Enter IP address

The IP address of the ARP entry that needs to be added

Enter MAC address

The MAC address of ARP entry that needs to be added

Type

Static – Will only last until the next reboot

Persistent – Will be written to the current.txt file and loaded on each boot of the NSE

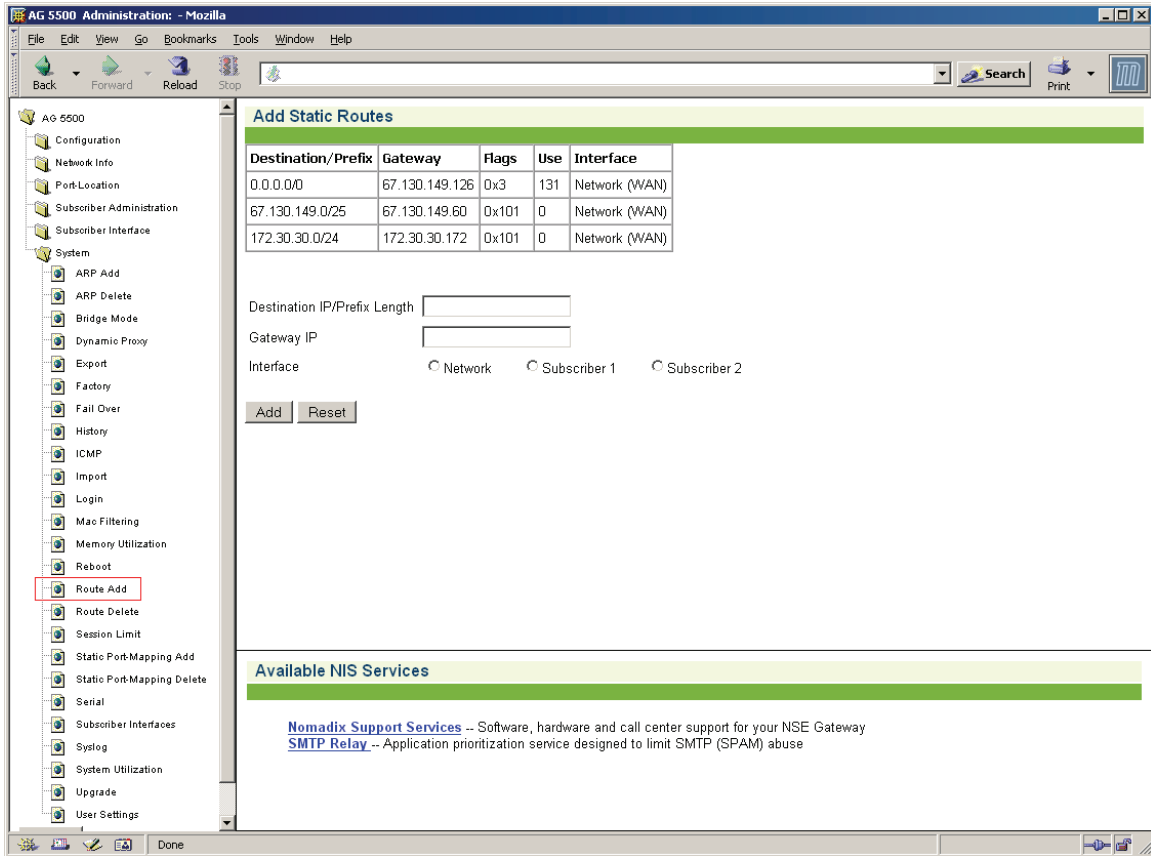
Interface

The interface that the device the ARP entry is connected to.

Persistent Route Add

This configuration can be set from the following menus:

- **WMI Configuration**
 - Go to System -> Route Add
- **CLI Configuration**
 - Go to System -> RouteAdd
- **SNMP Configuration**
 - Not available in SNMP



Destination IP/Prefix Length

This is the Destination IP or Subnet that the Route is trying to reach included with the /prefix length to determine how large the subnet might be.

Gateway IP

The Gateway IP for the Route being added so the NSE knows what to use to try and reach the destination IP/Subnet

Interface

The Interface the Gateway for this Route is connected to on the NSE