

FTP Examples

DOS:

The following will describe how to transfer files to and from the NSE using Windows 95/98/NT/2000/XP command line ftp. You will need to press the Enter key after each instruction.

1. Open an MS-DOS prompt and type, ftp IP address, substituting the IP address of your NSE.
2. You will then be prompted to enter in your User and Password information.
3. At the ftp> prompt type cd /flash/
4. At the ftp> prompt type ls (This will display a list of files in this directory)
5. To retrieve a file from this directory to your local machine:
6. At the ftp> prompt type get filename

To place a file in the directory on the server:

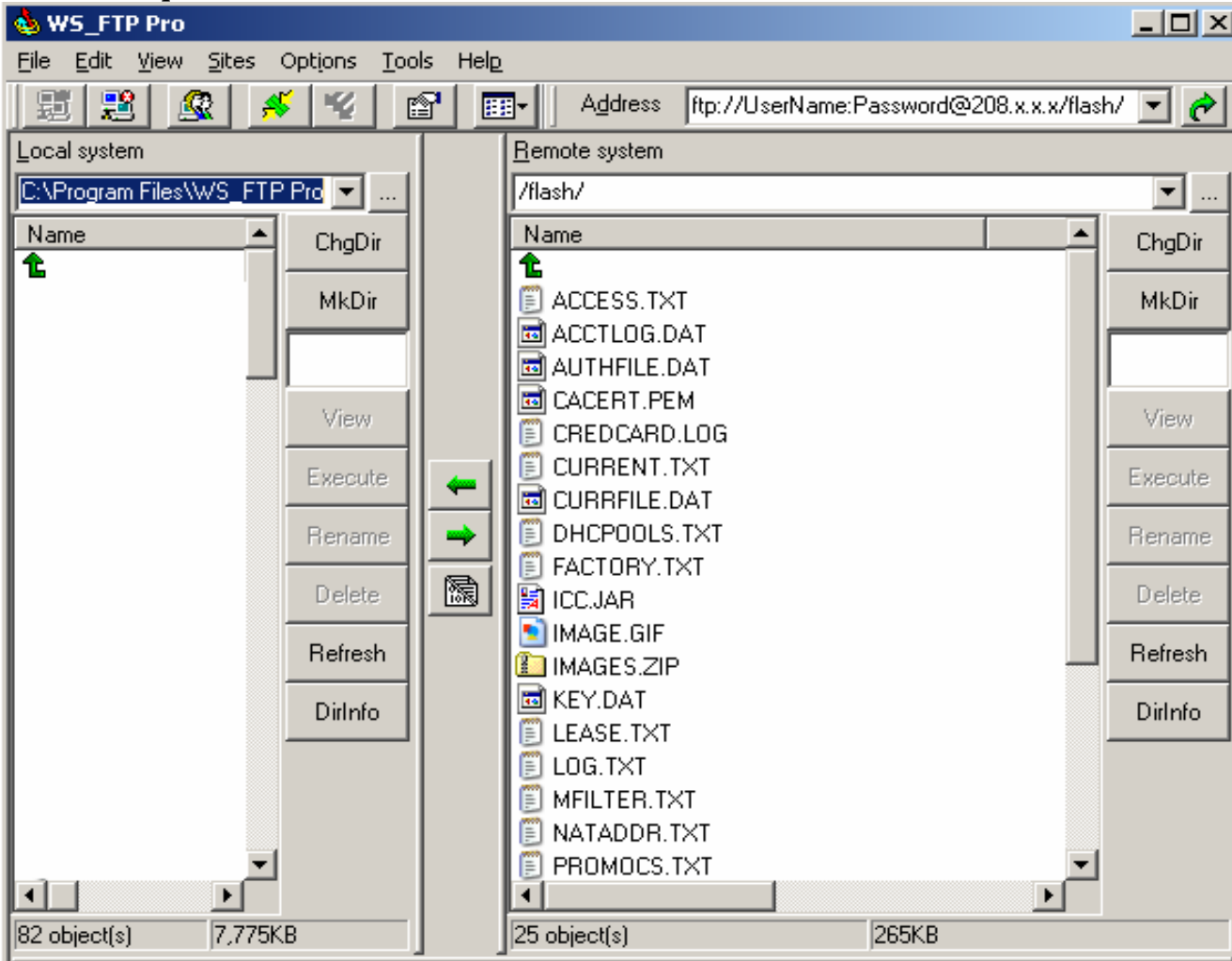
7. At the ftp> prompt type bin
8. At the ftp> prompt put filename

```
H:\>ftp type the USG/HSG IP address
Connected to 208. . . .
220 HSG (<> FTP server ready
User (208. . . . :<none>): admin
331 Password required
Password:
230 User logged in
ftp> cd /flash/
250 Changed directory to "/flash/"
ftp> ls
200 Port set okay
150 Opening ASCII mode data connection
BOOTROM.SYS
MFILTER.TXT
CACERT.PEM
IMAGE.GIF
UF_IP.TXT
CAKEY.PEM
UF_DNS.TXT
ACCESS.TXT
CREDCARD.LOG
KEY.DAT
RADFILE.DAT
ROOMFILE.DAT
AUTHFILE.DAT
MAPPINGS.TXT
NATADDR.TXT
REALMRTE.TXT
SERUPROF.TXT
CURRENT.TXT
SUBNETS.DAT
CURRFILE.DAT
UXWORKS
LOG.TXT
IMAGES.ZIP
NOMADIX.MIB
ICC.JAR
UPGRADE.TXT
FACTORY.TXT
LEASE.TXT
ACCILOG.DAT
DHCPOOLS.TXT
RMTLOG.DAT
226 Transfer complete
ftp: 351 bytes received in 0.01Seconds 23.40Kbytes/sec.
ftp> get current.txt
200 Port set okay
150 Opening ASCII mode data connection
226 Transfer complete
ftp: 20140 bytes received in 0.27Seconds 76.00Kbytes/sec.
ftp> bin
200 Type set to I, binary mode
ftp> put c:\temp\pimage.gif
200 Port set okay
150 Opening BINARY mode data connection
226 Transfer complete
ftp> -
```

To terminate the session at any time, at the ftp> prompt type quit

WS-FTP

You can do quick connect in the address field.



If you are FTP to the gateway from the remote site and both behind the Fire-Wall or DSL, try enabling Passive Mode.

