



**Purpose: To enable authentication using Steel-Belted Radius.**

**Step 1: Configuring Vendor Information.**

In the Service directory, edit the Vendor.ini add the following:

```
vendor-product      = Nomadix USG
dictionary          = nomadix
ignore-ports       = no
help-id            = 0
```

**Step 2: Creating the Nomadix.dct.**

Depending on the version of Steel-Belted Radius you are running, the Nomadix.dct may already exist. If it does, verify that all four of the Nomadix Vendor Specific Attributes are defined within the nomadix.dct file.

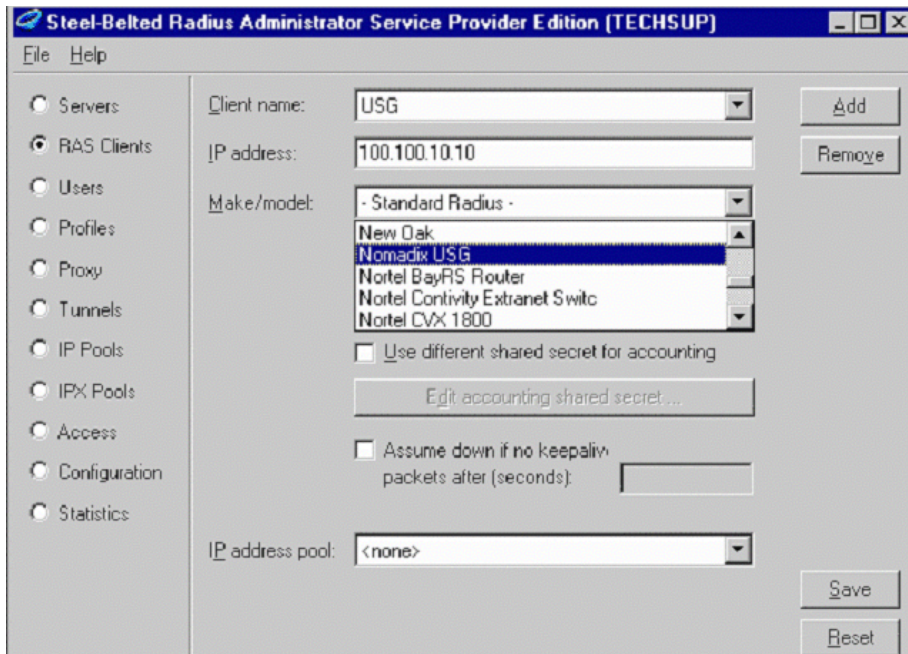
In the Service directory, create a dictionary file named nomadix.dct exactly as shown below.

```
#####
#####
# nomadix.dct - Nomadix, Inc. specific attribute(s)
#####
#####
#
# Bandwidth Attributes for Nomadix
#
@radius.dct
ATTRIBUTE Nomadix-Bw-Up          26 [vid=3309 type1=1 len1=+2 data=integer] r
ATTRIBUTE Nomadix-Bw-Down       26 [vid=3309 type1=2 len1=+2 data=integer] r
ATTRIBUTE Nomadix-URL-Redirection 26 [vid=3309 type1=3 len1=+2 data=string] r
ATTRIBUTE Nomadix-Ip-Upsell     26 [vid=3309 type1=4 len1=+2 data=integer] r
#####
# nomadix.dct - Nomadix, Inc. specific attribute(s)
#####
```



### Step 3: Adding the NSE as a client.

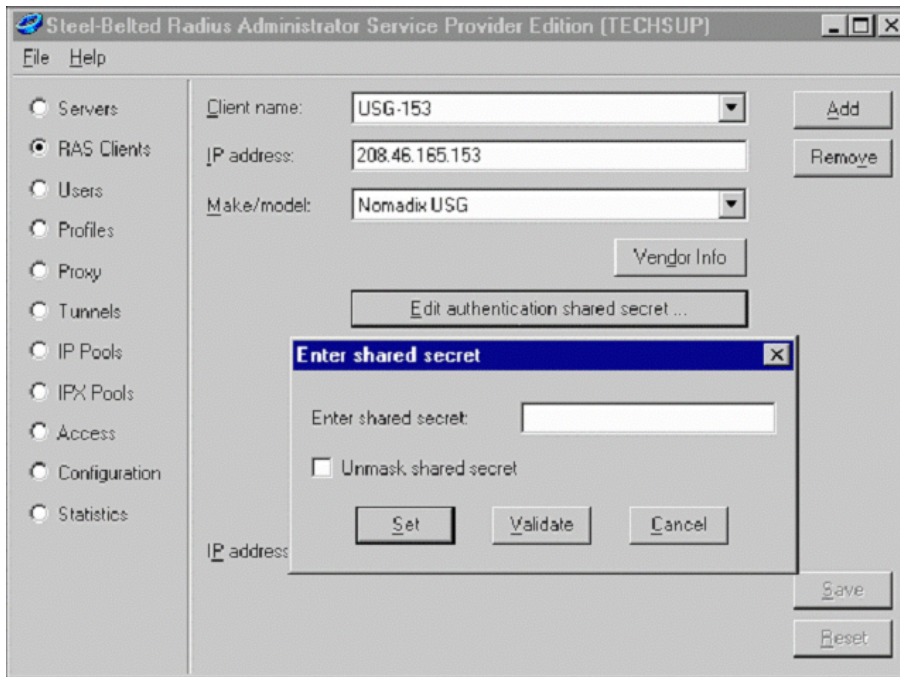
Enter in the name you wish to assign to the Client, its IP address and select Nomadix USG from the Make/Model drop-down list.





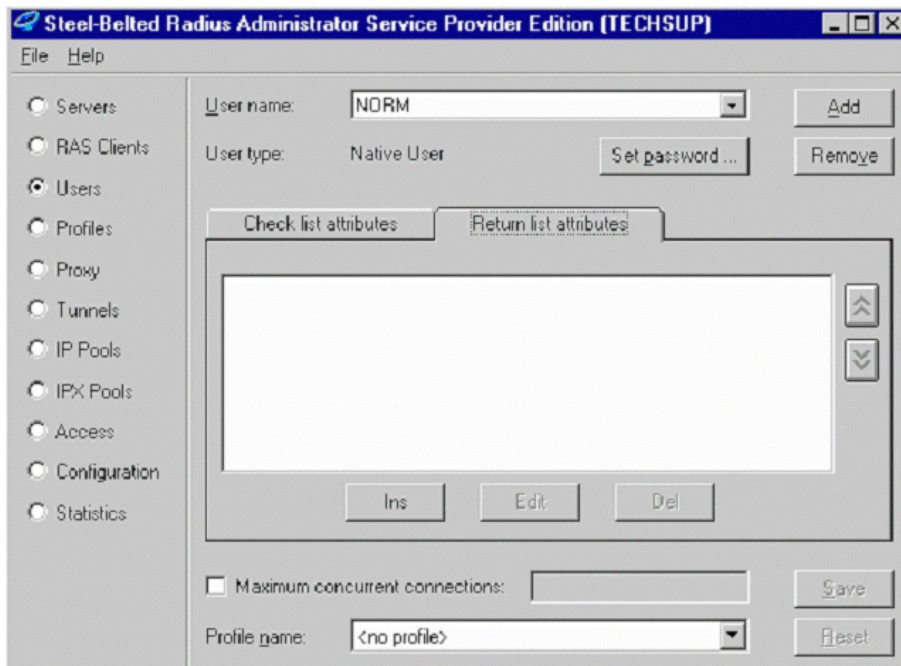
#### Step 4: Enter the Shared Secret.

Click on Edit authentication shared secret and enter in the secret key that will be used. This must match the secret key entered in the Radius Options settings of the NSE.

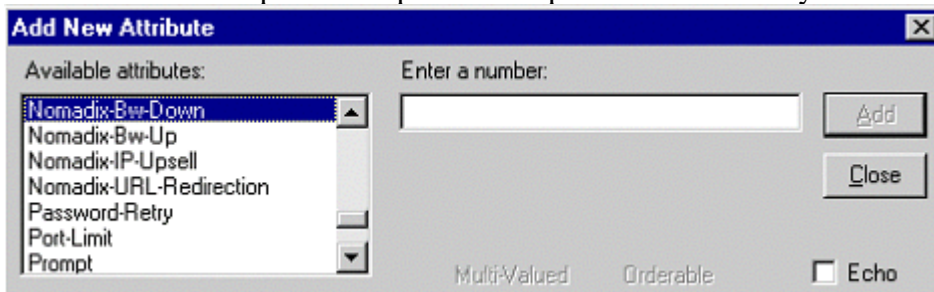


**Step 5: Adding the Nomadix Vendor Specific Attributes to a user profile.**

Select the user profile and click on the Return List tab. Next, click on Insert to view the available attributes.



Select the attribute you wish to assign the user and assign the value. Click Add to add this attribute to the user profile. Repeat this step for each attribute you wish to add.



Click Close when done and then Save to save the changes to the user profile.