



Purpose: To enable the NSE to respond to Smart Client and GIS Client authentication.

Step 1: Enable AAA Internal Web Server and Smart Client and GIS Client Support

GIS Support is only required if using a portal page that will communicate with the Smart Client application.

Authentication Authorization and Accounting Settings

AAA Services Enable

Options Internal Web Server External Web Server

SSL Support Enabled ⓘ

Encrypt only Sensitive Data Enabled

Certificate DNS Name

Enable

Portal Page

Portal Page URL ⚠ Caution

Parameter Passing Enabled

Parameter Signing:

Method None HASH-CRC32 HMAC-MD5

Parameters UI MA RN PORT SIP

Set Shared Secret (write-only)

Manual Passthrough Address Enabled

Supports GIS Clients Yes

Block IWS Login Page Yes

Portal XML POST URL ⚠ Caution

Portal XML Post Port

Usernames Enabled ⓘ

New Subscribers Enabled

Relogin After Timeout Enabled

PayPal Service Enabled »

Smart Client Support Enabled

Save Save then Reboot Restore



Step 2: Create Radius settings

a) Add a Radius Service profile

Realm-Based Routing Settings

RADIUS Service Profiles (up to 10 may be created)

No RADIUS service profiles are defined.

[Add](#) Click here to add a new RADIUS service profile.

Add RADIUS Service Profile

Unique Name:

Authentication

Enable RADIUS Authentication Service

Protocol:

Primary IP / DNS: Port: Secret Key:

Secondary IP / DNS: Port: Secret Key:

Accounting

Enable RADIUS Accounting Service

Primary IP / DNS: Port: Secret Key:

Secondary IP / DNS: Port: Secret Key:

Retransmission Options

Retransmission Method: Failover Round-Robin

Retransmission Frequency: (seconds)

Retransmission Attempts: (per server)

[Add](#)



b) Set Radius Client Settings

For the Routing Mode select Fixed.

For the Default RADIUS Service Profile, select the one you just created from the drop down list.

RADIUS Client Settings
Setup AG as a RADIUS client

Server Selection and Communication

Default RADIUS Mode: Disabled Realm-Based **Fixed**

Default RADIUS Service Profile: **testradius** ▼

Local Authentication Port: (0 means port number will be selected dynamically)

Local Accounting Port: (0 means port number will be selected dynamically)

Later login supersedes previous

Miscellaneous Options

Default User Idle Timeout: (seconds)

User Login Retry Timeout: (seconds)

Enable Automatic Subscriber Reauthentication

Automatic Subscriber Reauthentication Timeout: (minutes)

Restrict Reauthentication to Originally Authenticated Zone

Enable URL Redirection

RADIUS Client Settings

Send NAS identifier

NAS identifier:

Send NAS IP

Send NAS Port type

NAS Port Type:

Send Framed IP

Enable Termination-Action Radius Attribute

Percent of Max Subscriber Data Volume to Trigger RADIUS-Request Termination-Action event: (only applicable for volume-based sessions)

Enable Session-Terminate-End-Of-Day When Authorized

Enable Byte Count Reset On Account Start

Enable Radius Subnet Attribute

Enable Goodbye URL

Enable Forgot your Password

Forgot your Password URL:

(Note: This URL will be added to the passthrough address list)

Enable user session time adjustment for NSE down time

Enable charging for idle time

Enable RADIUS QoS Policies

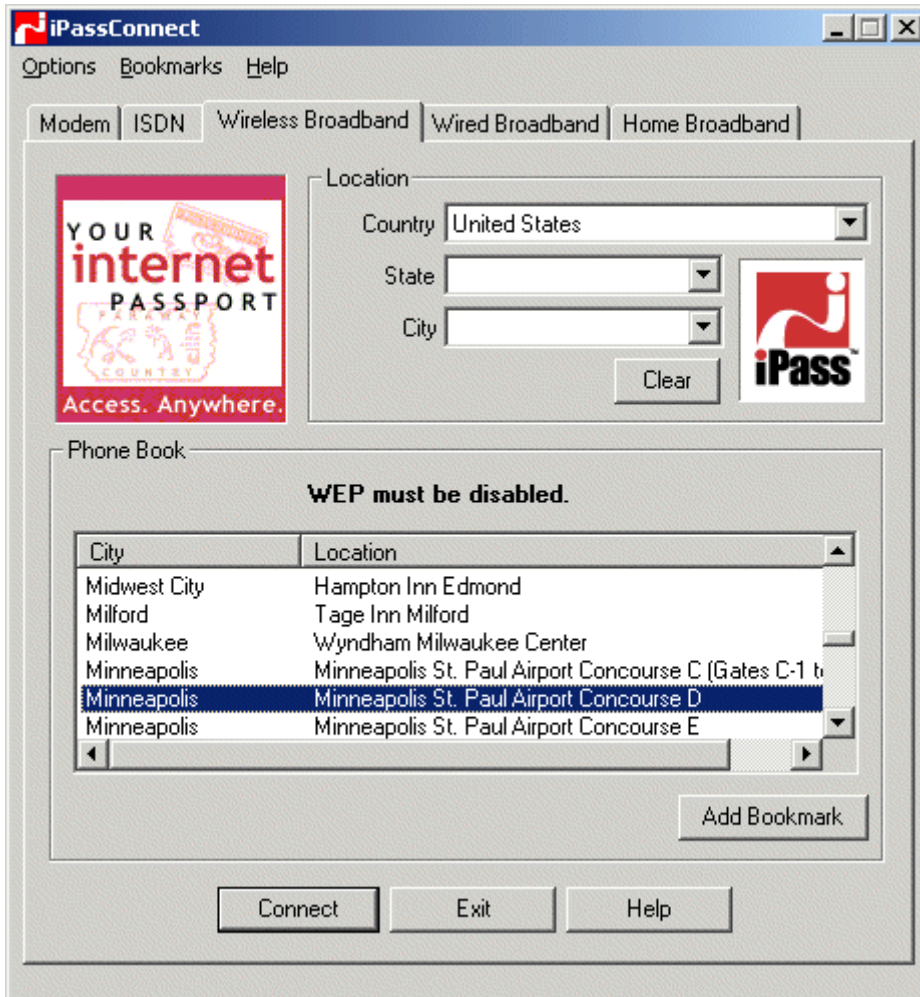
Note: When connecting to a roaming provider such as Ipass or Boingo, you will need to enable the Realm Routing Policy for the provider as well as configure the radius server settings for the policy. The roaming provider should provide you with the radius server details.



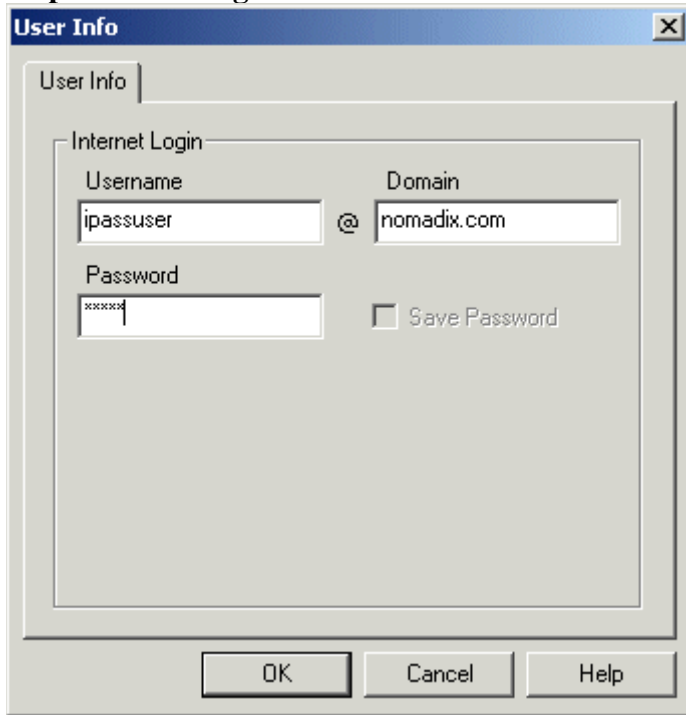
The User Experience

IPass Client

Step 1: Selecting the proper location.



Step 2: Enter Login information.



The image shows a Windows-style dialog box titled "User Info". It contains a tab labeled "User Info". Inside the dialog, there is a section titled "Internet Login" with the following fields and controls:

- Username:** A text box containing "ipassuser".
- Domain:** A text box containing "nomadix.com".
- Password:** A text box containing "xxxxxx".
- Save Password:** An unchecked checkbox.

At the bottom of the dialog, there are three buttons: "OK", "Cancel", and "Help".

Confirmation that the IPass client is running.





GRIC Client

Step 1: Enter Login information.

A screenshot of a Windows-style dialog box titled "Login Properties". The dialog has a blue title bar with a close button (X) on the right. Below the title bar are four tabs: "Access", "Programs", "Timeout", and "Personal Firewall Settings". The "Access" tab is selected. Inside the dialog, there is a section titled "Network Login Information" enclosed in a rounded rectangle. This section contains a "Login ID:" label followed by a text box containing "gricuser" and an "@" symbol, and another text box containing "nomadix.com". Below this is a "Password:" label followed by a text box containing "*****". At the bottom of this section is a checkbox labeled "Save password at exit" which is checked. At the bottom of the dialog box are three buttons: "OK", "Cancel", and "Apply".



Step 2: Select Location.

A screenshot of a Windows-style dialog box titled "Login Properties". The dialog has a blue title bar with a close button (X) on the right. Below the title bar are four tabs: "Access", "Programs", "Timeout", and "Personal Firewall Settings". The "Access" tab is selected. Inside the dialog, there is a section titled "Network Login Information" enclosed in a rounded rectangle. This section contains three input fields: "Login ID:" with the text "griuser" and a blue selection highlight, followed by an "@" symbol and a field containing "nomadix.com"; "Password:" with a field containing six asterisks "*****"; and a checked checkbox labeled "Save password at exit". At the bottom of the dialog are three buttons: "OK", "Cancel", and "Apply".



Step 3: Confirmation that the Login was successful.

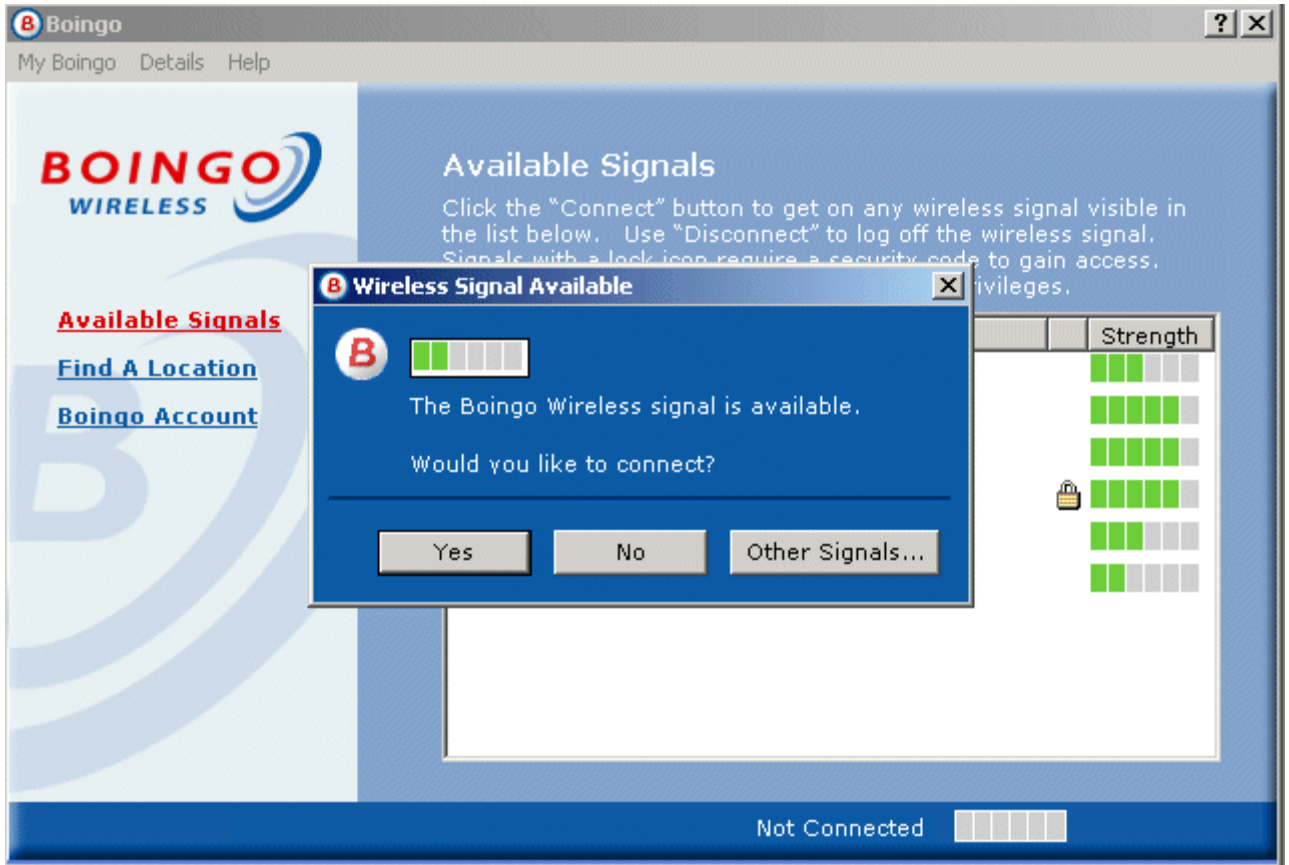
Your request was successful

A screenshot of a web browser window titled "Wireless Login from Westlake Village, CA, USA/Nomadix 1". The browser displays the GRIC website. At the top left is the GRIC logo. To the right are navigation links: "Phonebook | Downloads | Customer Care | Contact Us | Member L...". Below this is a horizontal menu with "Company Info", "Products & Services", "TierOne Network", "Partners & Customers", and "Investor Relations". The main content area has a purple background with a circular graphic containing the text "mobile office" and "GRIC's Mobile Office". To the right of this graphic is a "Quick Links" menu with items like "Company Overview", "Webcast", "Stock Quote", "SEC Filings", "Press Release Request", "Annual Reports", "Printed Materials", and "Investor FAQs". Below the main graphic, there are sections for "TierOne" (with an AOL logo) and "Partners" (with a webex logo). A "GRIC's Vision" section contains text about their mobile office solution and a "Sign Up" button. A "Latest News" section lists several news items with links, such as "AT&T Enhances Dial Internet Access with Extended Roaming" and "GRIC CEO Says Broadband Wireless Has A Bright Future".



Boingo Client

Step 1: Launch the Boingo Client.





Step 2: Enter in Login information.

A screenshot of a Windows-style dialog box titled 'Boingo Login'. The dialog has a blue background and a white border. At the top, it says 'You are connecting to a Boingo Wireless signal. Please log in.' Below this, there are two input fields. The first is labeled 'User Name' and contains the text 'jcook'. To the right of this field is a button labeled 'Change User...'. The second input field is labeled 'Password' and contains a series of asterisks. Below the password field is a checkbox labeled 'Remember my password' which is checked. At the bottom of the dialog are two buttons: 'OK' and 'Cancel'.

Step 3: Confirmation that the Login was successful.



NOMADIX

The screenshot shows a web browser window titled "Boingo". The navigation menu includes "My Boingo", "Details", and "Help". On the left sidebar, there is the "BOINGO WIRELESS" logo and three links: "Available Signals", "Find A Location", and "Boingo Account". The main content area is titled "Available Signals" and contains a paragraph of instructions: "Click the 'Connect' button to get on any wireless signal visible in the list below. Use 'Disconnect' to log off the wireless signal. Signals with a lock icon require a security code to gain access. Some unlocked private signals require login privileges." Below this text is a table of available signals.

Status	Signal Name	Strength
CONNECTED	Boingo Wireless	
CONNECT	Nomadix2002	
CONNECT	nomadix-proxim-hotspot	
CONNECT	nomadix-agere-hotspot-1000	
CONNECT	default	
CONNECT	AP-2000-Testlab_A	

At the bottom of the interface, a status bar shows "Connected to Boingo Wireless" with a strength indicator and a red "DISCONNECT" button.